

fitzke

Custom Homes ■ ■ ■

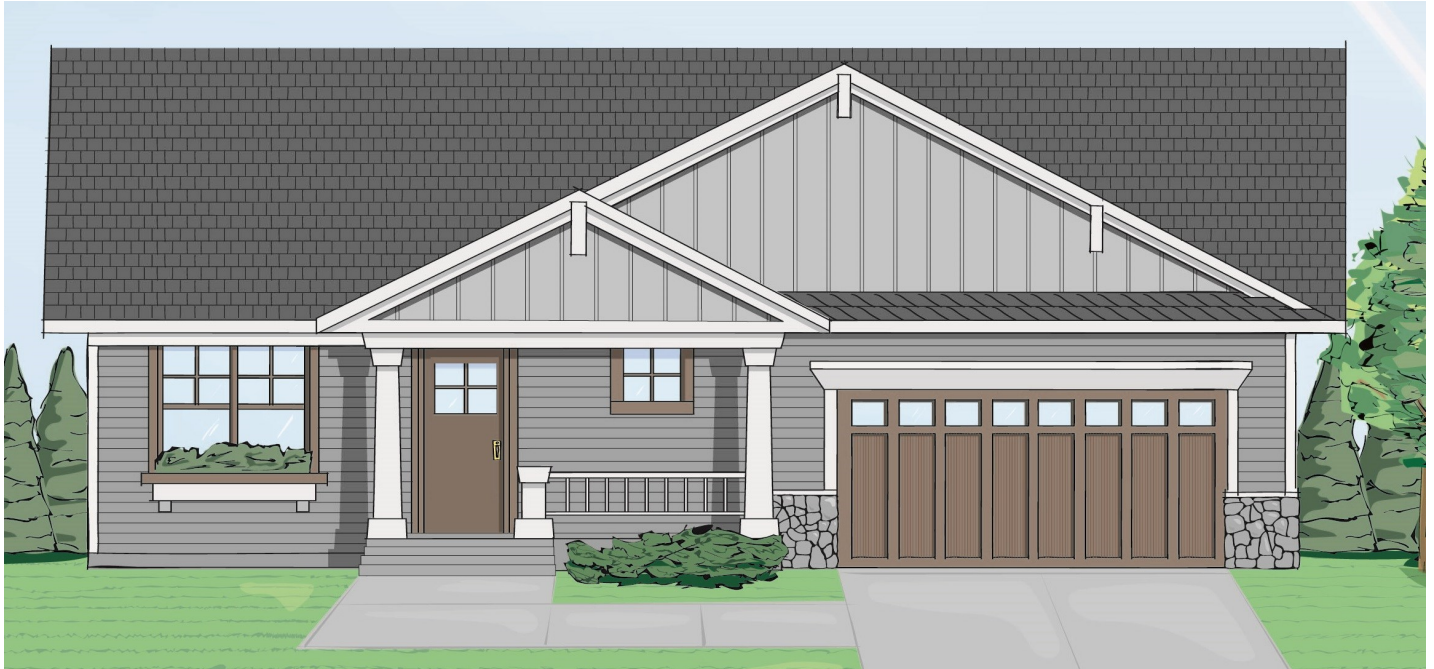


The Faribault

www.FitzkeMN.com

hello@FitzkeMN.com

612.424.2569



- One level living with 10' ceilings in the great room
- Open and Bright floor plan included designer kitchen with granite countertops and large eat at island.
- Master Suite with expansive walk in closet. Master bath includes barrier free shower entrance
- Second bedroom and bathroom on main level.
- MN Green Path energy rating with emphasis on state of the art energy features
- Low Maintenance exterior with LP Smartside Siding on the front and 30 year architectural shingles



Copyright Fitzke Construction 2024



MN LIC # BC635511



Custom Homes ■■■

The Faribault

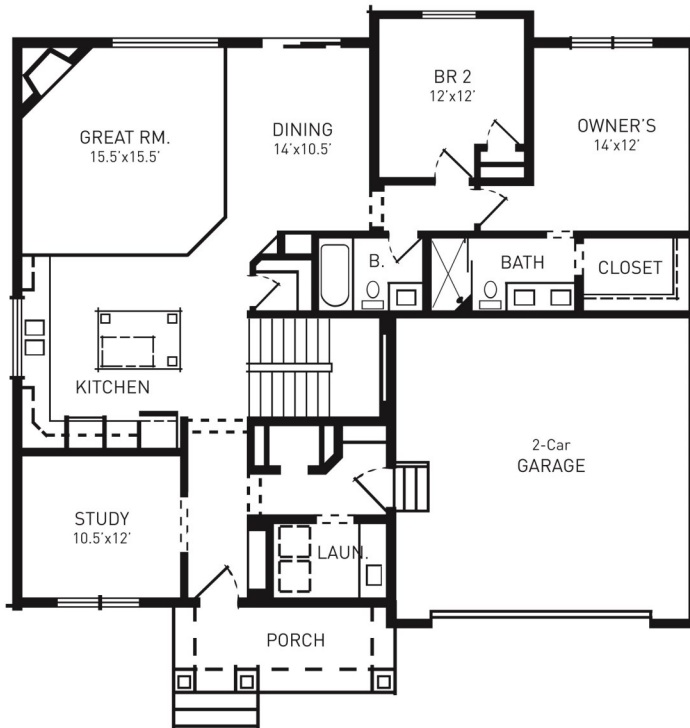
Main Floor 1584 sqft

1500 Optional sqft finish lower level

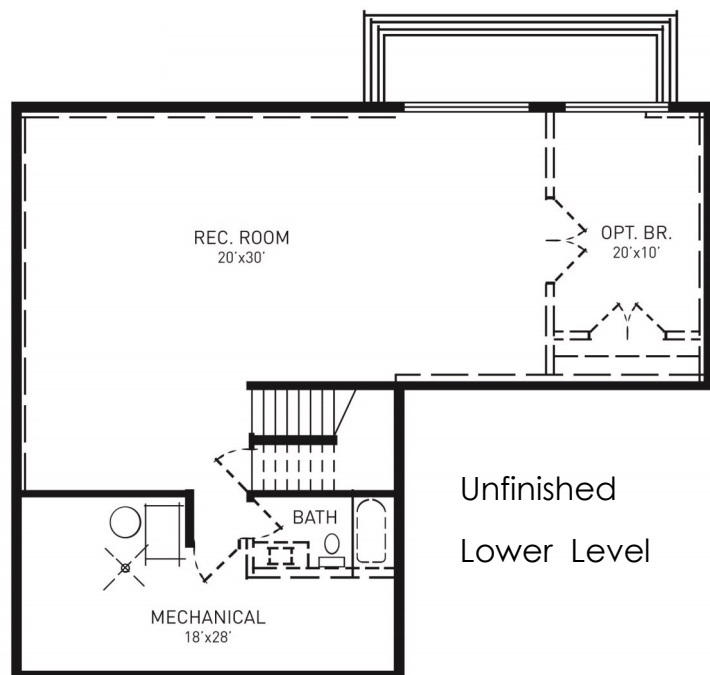
www.FitzkeMN.com

hello@FitzkeMN.com

612.424.2569



Main Level



Unfinished
Lower Level

