

fitzke

Construction



The Shorewood

www.FitzkeConstruction.com

info@FitzkeConstruction.com

612.424.2569



- Open and Sunny floor plan with large windows, 11' main floor ceilings with natural gas fireplace
- Spacious designer kitchen with island
- 4 bedrooms, and 3 bathrooms Double vanity in master bath
- Jumbo 4 car garage
- Exceptional energy rating with emphasis on state of the art energy features
- Low Maintenance exterior with LP Smartside Siding on the front and 30 year architectural shingles



fitzke

Construction....

The Shorewood

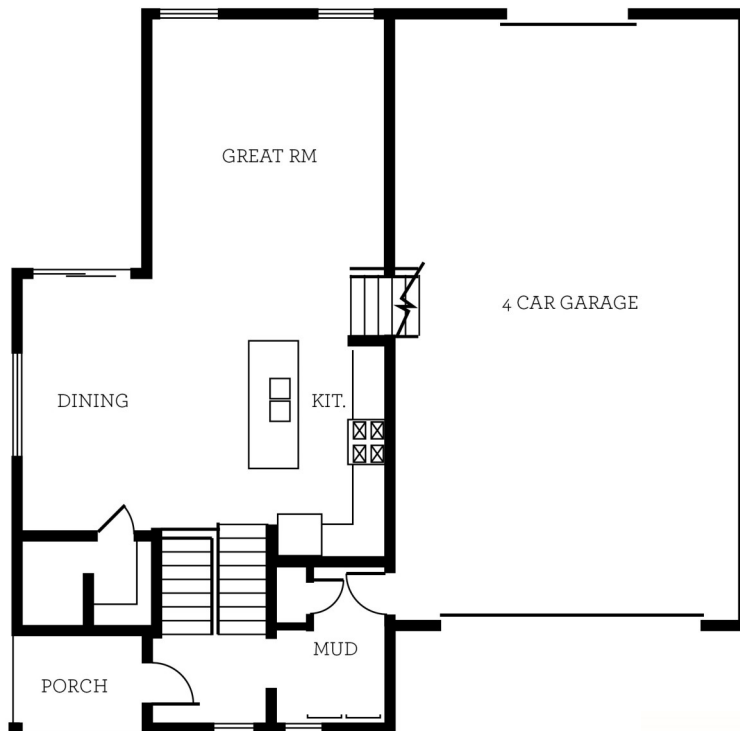
Main Floors 1710 sqft

620 Optional sqft finish lower level

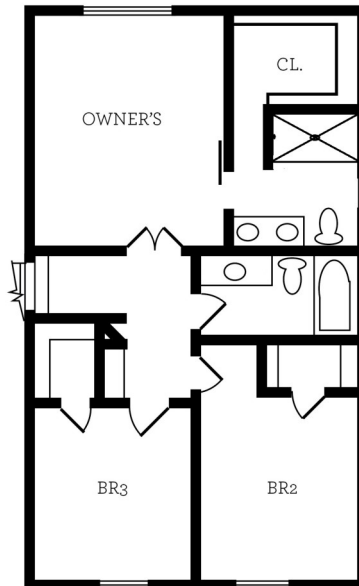
www.FitzkeConstruction.com

info@FitzkeConstruction.com

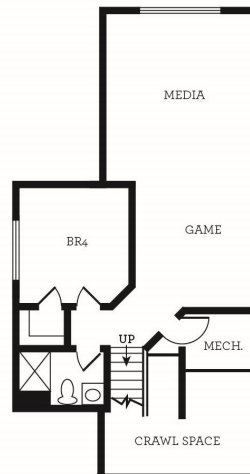
612.424.2569



Main Level



Upper Level



Lower Level

